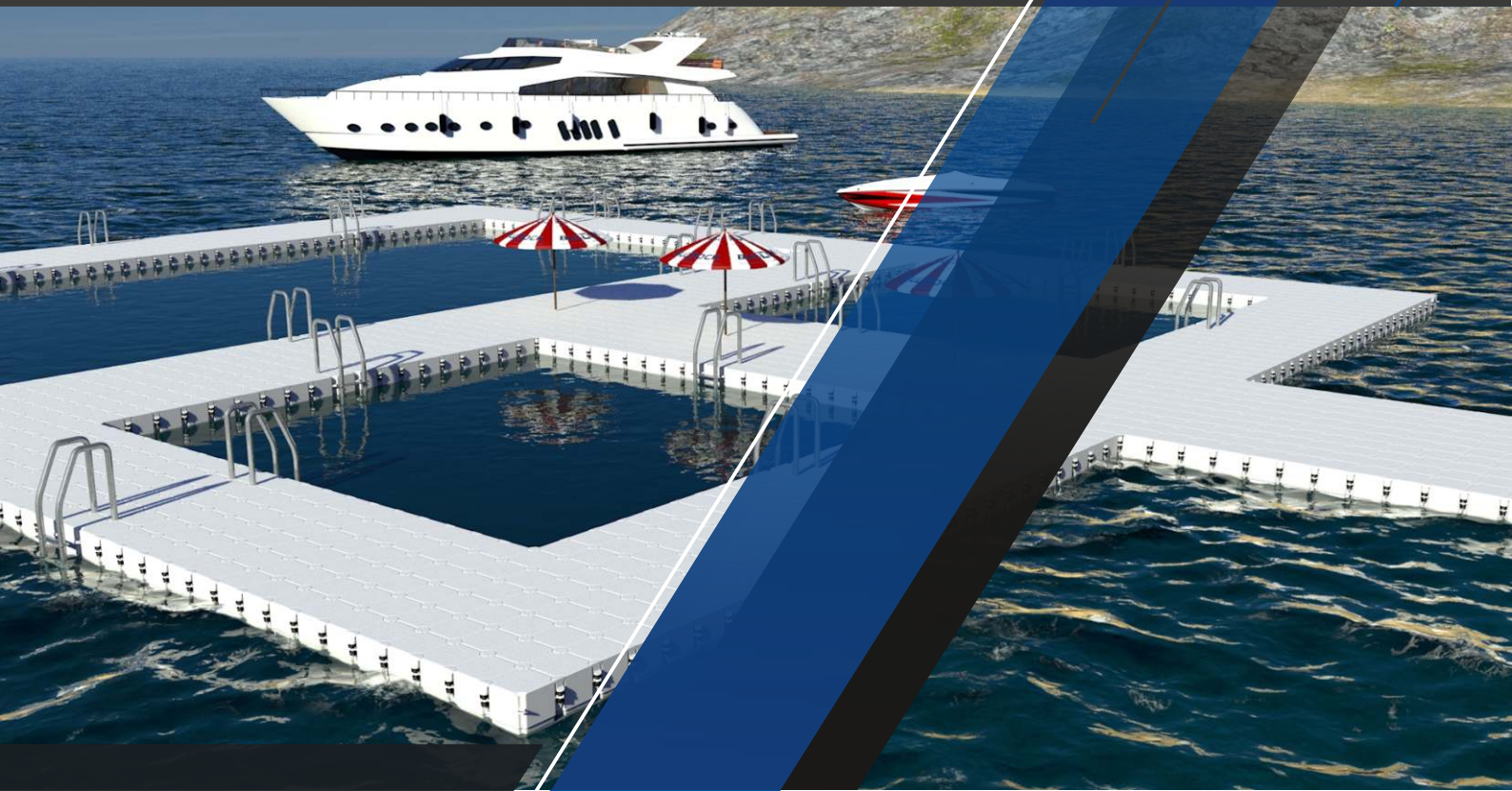


BULDOCK

QUALITY MODULAR PONTOON SYSTEMS



Brochure

www.buldock.com

Art Project **The Floating Piers:**

Our brand is uncompromising in the quality of cubes and pins that are used to build floating docks, floating platforms, floating bridges and paths, yacht ports, breakwaters and many more.

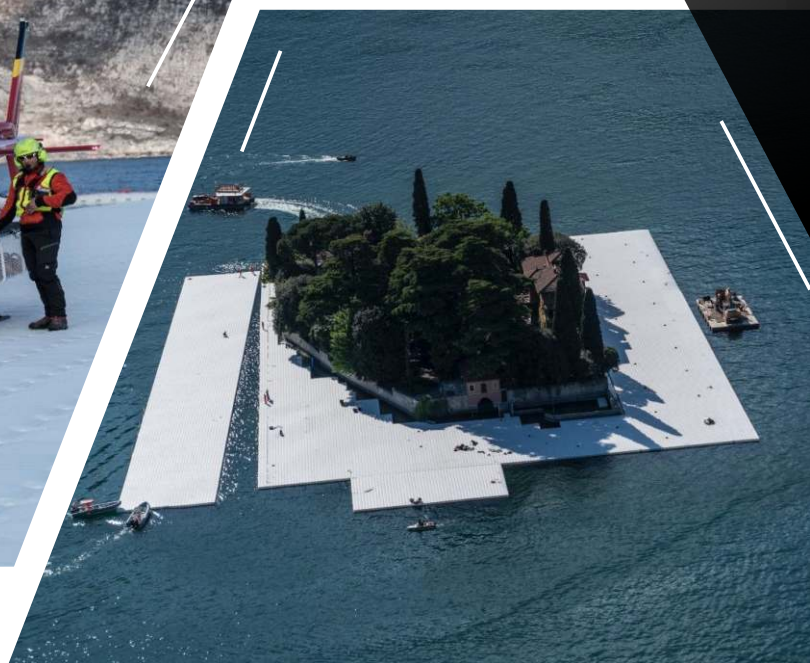


The world-famous artist, Christo, chose these similar modular systems after testing them and being convinced in their exceptional quality.



BulDock, a brand of Deep Dive Systems, offers design, manufacturing, and installation of high-quality floating modular dock systems.

BulDock has a number of advantages over the established competition thanks to the strong commitment to innovation. Our products are created using cutting-edge techniques and technologies to deliver safe, efficient and durable floating system solutions.



Committed to the highest quality standards and ongoing improvement, we continuously test and improve our products to deliver the best value to our customers.

ADVANTAGES



LIMITLESS POSSIBILITIES

The cubes, the building blocks of the BulDock system, are suitable for any shoreline and can be assembled to create virtually **any shape of any size** to suit any need.



STRONG AND SAFE

For BulDock, safety is an absolute priority. Our systems are thoroughly and regularly tested, have an anti-slipping surface, high load capacity, and no metal parts to ensure a **safe and comfortable experience**.



RESPONSIBLE AND RESISTANT

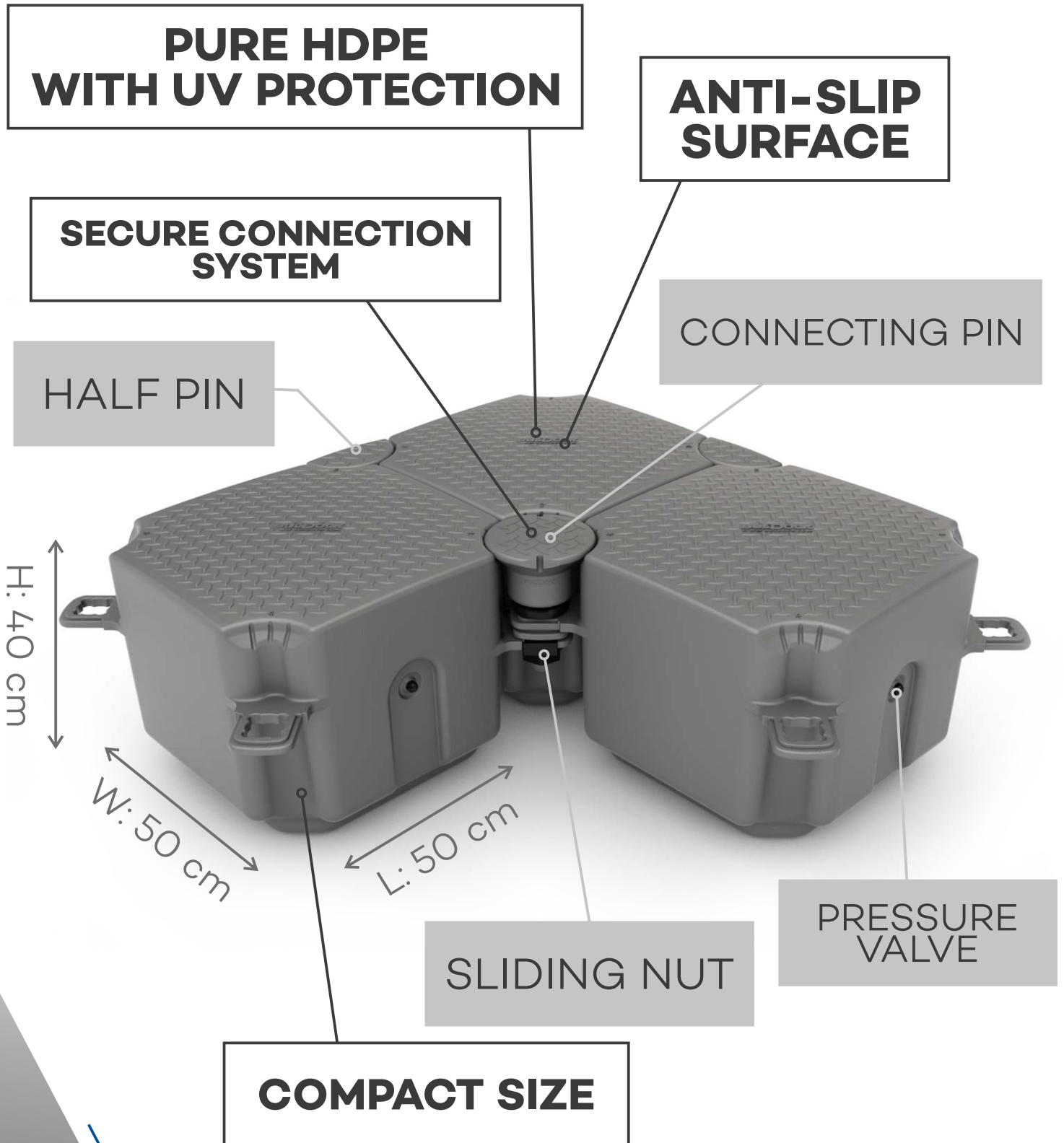
Here at BulDock, we are conscious of the impact our work has on the environment. That is why our products are not only manufactured in a responsible way but are also **resistant to sunlight, water and impact**, making them last much longer.

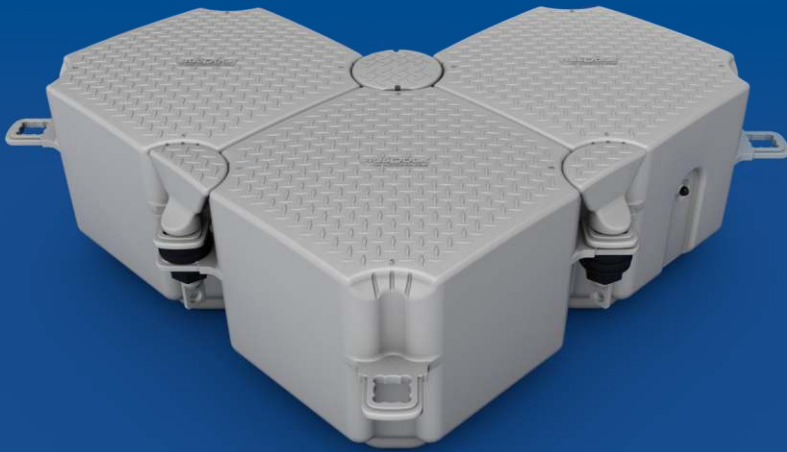


QUICK AND CONVENIENT

BulDock floating systems are **designed to be simple**. It is very easy to put the cubes together using a few pins and nuts. The docks can be anchored to an existing structure or any type of seabed in any conditions.

ADVANTAGES OF THE SYSTEM:





The BulDock products are made with 100% high-density polyethylene and come with a 10-year warranty for peace of mind. Our modular docking systems are tested at extreme conditions to ensure their reliability. They are easy to use and require minimal maintenance. The many applications and build configurations of the system are sure to meet any pontooning need.



CHARACTERISTICS OF THE SYSTEM:

Material/Composition: **High-density polyethylene (HDPE)**

Surface: **Anti-slip**

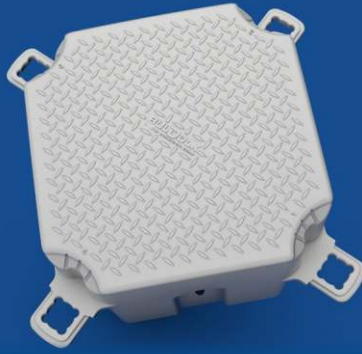
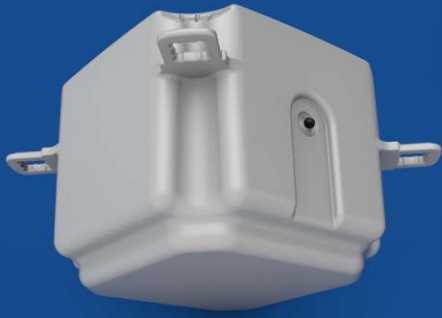
Dimensions of the Cube: **LxW: 50 cm x 50 cm H: 40 cm**

Weight of Cube: **6.8 kg**

Floating capacity: Cube: **92 kg per cube or 368 kg per sq. m.**

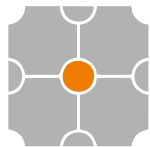
Standard colors: **Grey, Beige, Blue, Orange**

Optional colors: **any color** as per customer's preference



THE CUBE

The BulDock cube, a building unit of the system, boasts a number of innovative features. It is made of HDPE, for one. It is also taller than similar products in the market, meaning improved stability and efficiency. Premium plastic UV inhibitors are used in production, which ensures durability of the product.



CONNECTING PIN

The connecting pin is what holds the cubes together, once inserted into the sliding nut. When fixed in its position, the connecting pin, which also features anti-slip surface, becomes a part of the dock and contributes to the overall stability of the system.



Cube BulDock H40

Material / Composition:

High-density polyethylene (HDPE)

Surface: **Anti-Slip**

Dimension:

50x50x40 cm (Length/Width/Height)

Weight: **6.8 kg**

Floating Capacity:

92 kg per cube or 368 kg per sq. m.

Standard colors: **Grey; Beige; Blue; Orange**

Custom colors: **Other colors available on special request**



Cube BulDock H27

Material / Composition:

High-density polyethylene (HDPE)

Surface: **Anti-Slip**

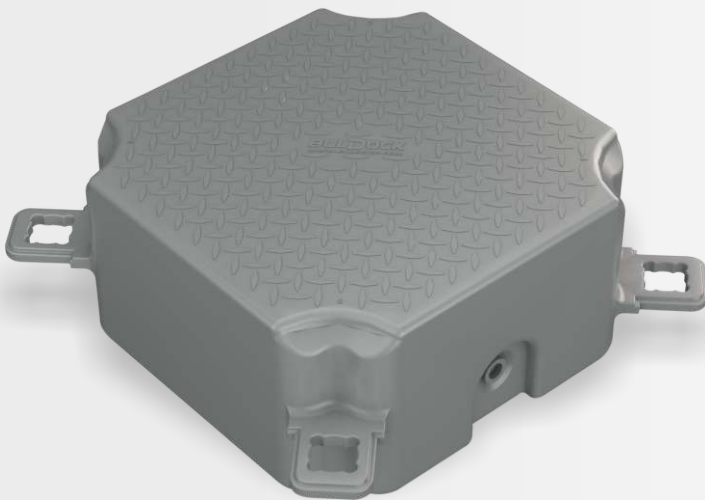
Dimension:

50x50x27 cm (Length/Width/Height)

Weight: **5.5 kg**

Floating Capacity:

62 kg per cube or 248 kg per sq. m.



V Cube BulDock H40 – Flat

Material / Composition:

High-density polyethylene (HDPE)

Surface: **Anti-Slip**

Dimension:

50x50x40 cm (Length/Width/Height)

Weight: **8.0 kg**

Floating Capacity:

80 kg per cube or 320 kg per sq. m.



V Cube BulDock H27 – Flat

Material / Composition:

High-density polyethylene (HDPE)

Surface: **Anti-Slip**

Dimension:

50x50x27 cm (Length/Width/Height)

Weight: **7.5 kg**

Floating Capacity:

50 kg per cube or 200 kg per sq. m.



V Cube BulDock H40 – Roller

Material / Composition:

High-density polyethylene (HDPE)

Surface: **Anti-Slip**

Dimension:

50x50x40 cm (Length/Width/Height)

Weight: **8.5 kg**

Floating Capacity:

80 kg per cube or 320 kg per sq. m.



V Cube BulDock H27 – Roller

Material / Composition:

High-density polyethylene (HDPE)

Surface: **Anti-Slip**

Dimension:

50x50x27 cm (Length/Width/Height)

Weight: **8.0 kg**

Floating Capacity:

50 kg per cube or 200 kg per sq. m.



BASIC FLOATING DOCK COMPONENTS



HALF PIN

Similarly to the connecting pin, the half pin holds the cubes together. The difference is that it is used on the edges of the dock, not in the middle.



SLIDING NUT



The sliding nut attaches to the connecting pin in order to form a structure.



NUT

The nut attaches to the exterior lug connector in order to form a structure.



SPACER



Each BulDock cube has four “ears” that are positioned at different heights. Spacer is what fills the space between them for improved stability and is mostly used when assembling the jet slider.

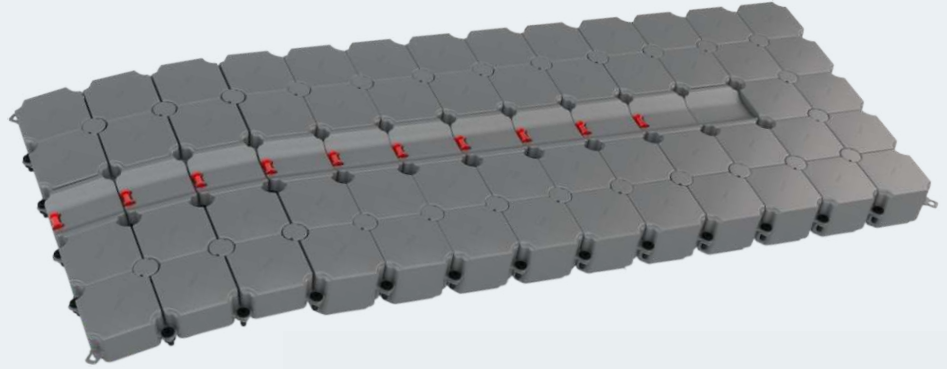
Small Boats Platform

The **Small boats platform** is made of efficient new-generation HDPE (high density polyethylene).

The Small boats platform possesses the same great advantages as the dock system.

The **Small boats platform** is **lightweight**, but thanks to its technology, it is resistant to impact, chemical products, UV rays and severe weather conditions.

The BulDock small boat system is a unique dry dock system. Its exceptional design prevents any disproportionate strain on the hull by distributing the watercraft's weight very evenly. The Small boat system is assembled without any moving parts, which might be damaged or which require maintenance. **Designed to simplify your needs, BulDock makes it possible for you to walk around your pleasure craft making boarding, servicing and doing maintenance on your watercraft much easier.**



Material / Composition:
High-density polyethylene (HDPE)

Dimension:
6.5m x 2.5m for inflatable boats
5/5.5m long

650x250x40 cm
(Length/Width/Height)

Weight:
390 kg

Standard Colors:



GREY



BEIGE

Optional colors: any color as per customer's wish

Jet Slider 350 - Jet Ski Medium Size Jet Slider 400 - Jet Ski Big Size



The **Jet Slider** is made of efficient new-generation HDPE (high density polyethylene).

The Jet slider possesses the same great advantages as the dock system.

The Jet slider is **lightweight**, but thanks to its technology, it is resistant to impact, chemical products, UV rays and severe weather conditions.



Material / Composition:

High-density polyethylene (HDPE)

Dimension:

350x150x40 cm (Length/Width/Height)

Weight: 150 kg

Standard Colors:



GREY



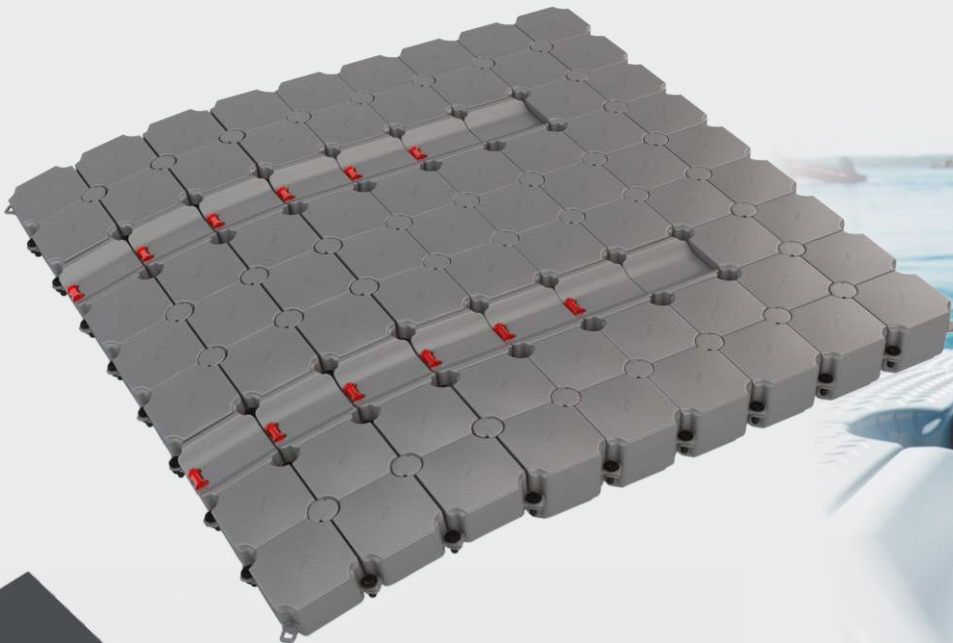
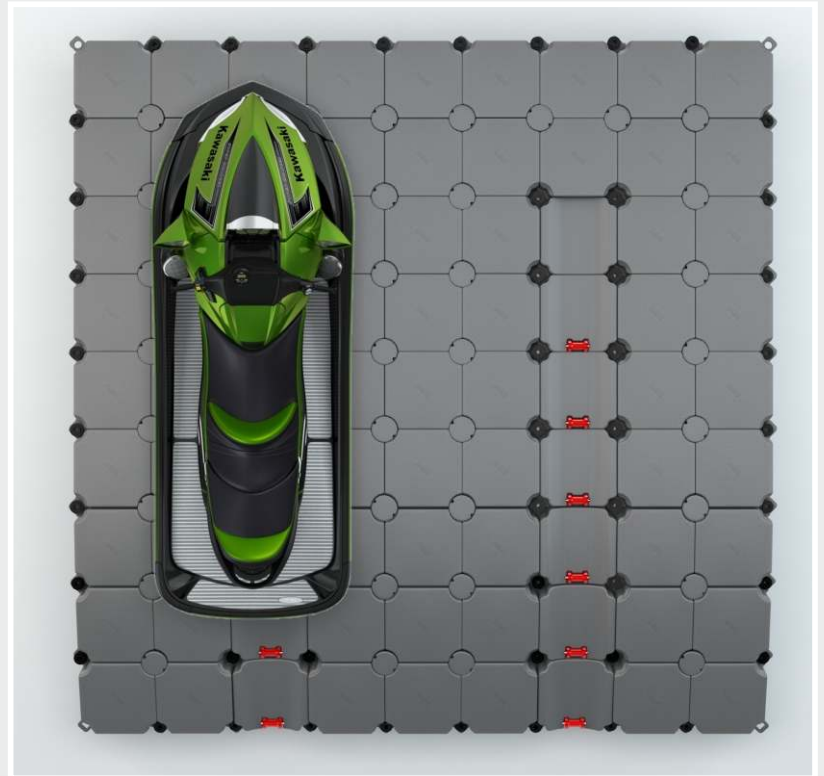
BEIGE

Optional colors:

any color as per customer's wish

Jet Slider Twin

The BulDock floating jet slide system is a unique dry dock system. Its exceptional design prevents any disproportionate strain on the hull by distributing the watercraft's weight very evenly. The Jet slider is assembled without any moving parts, which might be damaged or which require maintenance. **Designed to simplify your needs, BulDock makes it possible for you to walk around your pleasure craft making boarding, servicing and doing maintenance on your watercraft much easier.**



ANCHORING ACCESSORIES



LUG CONNECTOR

The lug connector is used to fix the back tabs of the cubes at the end of the jet slider. As our other products, the lug connector is made using injection molding, which enhances safety and security of the dock.

PILE GUIDING CUBE

These cubes hold the pontoon in place using piles. This method of anchorage is very secure and allows the structure to smoothly follow variations in the water levels - ideal for tidal zones.



CONCRETE ANCHOR

The concrete anchor can be used to increase the strength of the overall anchor and is easy to use.



ANCHORING ACCESSORIES



HELIX ECO-ANCHOR

The sea anchors have a holding power that is up to 5 times greater than the alternative solutions. In addition, they have shorter scoping, longer lifespan, minimal bottom disturbance, are reusable and environmentally-friendly. These anchors are made of high-grade steel with drop-forged connections and hot-dipped galvanizing.

ANCHORING RING

The anchorage ring is used to attach the chain from the concrete anchor to the dock and adjust the tension in the chain. The durable stainless steel material makes this an ideal component to use in salt as well as fresh waters.



CONNECTING PIN FOR ANCHORING

The connecting pin is attached underneath the dock and is used to hide any visible chains, and gaps between the cubes.



ACCESSORIES

BulDock offers a range of accessories for floating dock systems.

INOX LADDER

Made from polished Stainless Steel - Quality 3 step Inox Ladder with extra tall handrails for easy boarding and unique, universal supporting design with dimensions: H: 183 cm, W: 83 cm (steps width: 56 cm).



LONG PIN WITH INOX CLEAT



The long pin is designed to also act as a cleat, making it an integral part of the floating system. A convenient solution for mooring watercrafts..

APPLICATIONS



MARINAS

The BulDock modular docking system is a perfect addition to a cottage on a lake or a beach house. The ease of use, reliability and virtually limitless number of configurations will make our system an integral part of any waterside residence.

RESIDENTIAL

The BulDock modular docking system, thanks to its flexibility, can be used to configure a marina. It's easy to assemble and suitable for high-load capacities.



BRIDGES AND PATHWAYS

Clunky wooden and metal bridges are a thing of the past. The BulDock modular docking systems can be used to construct bridges and pathways: safe thanks to the anti-slip surface and effective thanks to the high-load capacity.

INDUSTRIAL

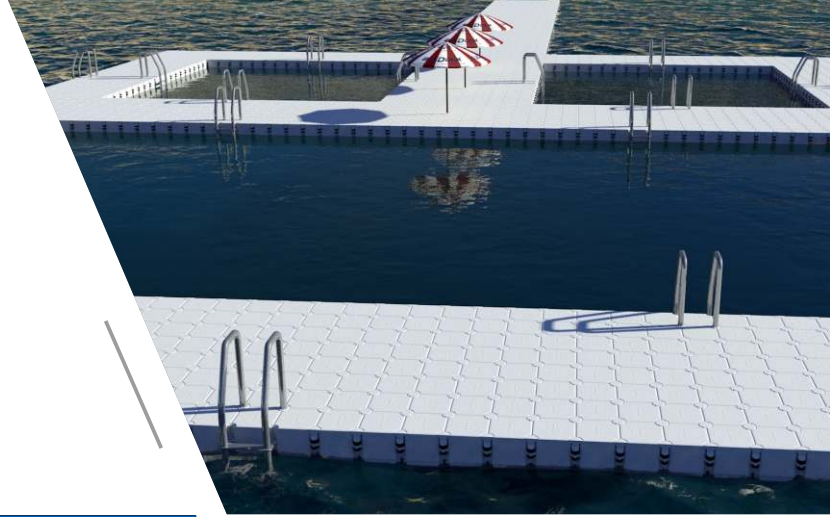
The BulDock modular docking system can be used in a variety of industrial projects, including construction, repair and maintenance of bridges, canals, harbors, and other water-based objects..



APPLICATIONS

LEISURE

The BulDock modular docking system can be assembled into a number of recreational facilities, such as floating pools, fishing platforms, aqua parks, and floating holiday complexes.



EVENTS

The BulDock modular docking system can make guests at your event quite literally walk on water. To everything, from a lakeside wedding to a beach party, our floating dock system can add a lot of flavor to any occasion.

ART INSTALLATIONS

The BulDock modular docking system can also be used for art projects. “**The Floating Piers**”, for instance, by the famous Christo. This vibrant piece became one of the most discussed works of art in 2016, as reported by New York Times.



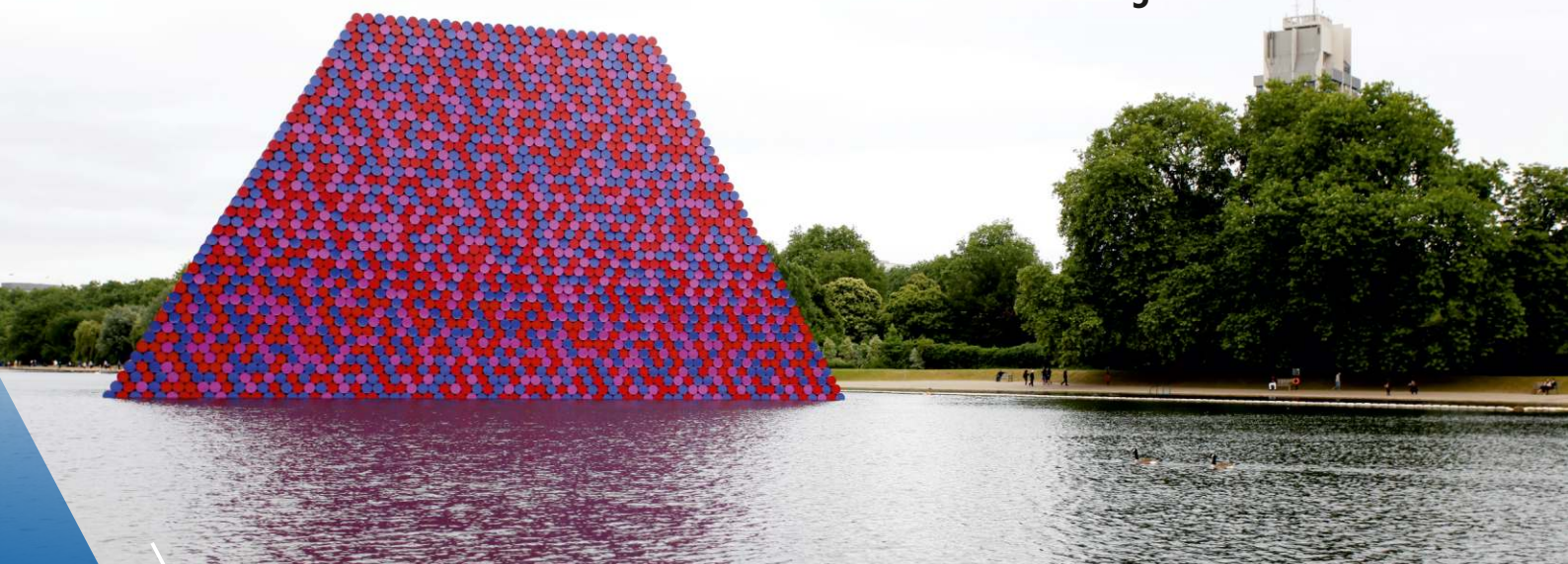
Art Project **Mastaba:**



Deep Dive Systems under the brand of Buldock is taking part in constructing and anchoring of the floating structure.

The Mastaba itself is a stack of 55-gallon barrels, numbering 7,506 in all, floating on the lake.

Christo's Mastaba is a modern masterpiece. It is 20m high by 30m wide and 40m long.



BULDOCK



Learn more about BulDock products on our website
www.buldock.com



Request a quotation
Let's build your dock!



Become a BulDock distributor



+359 878 333 878
+359 886 166 199



Get in touch
office@buldock.com